

## NMD Building Control Service Update



**NMD Building Control are seeking to support all our service users. However, following the advice issued by the CIC we are now suspending all face to face site visits unless work is considered to be safety critical. Normal inspections will resume as soon the risk of our Surveyors contributing to the spread of the Coronavirus is reduced.**

### Plan assessment

Applications are being received and processed. Please submit applications via the [Planning Portal](#) or by email to [mail@nmdbuildingcontrol.co.uk](mailto:mail@nmdbuildingcontrol.co.uk). We are also happy to attend design team meetings via video link.

### Site inspection

Where work is continuing we are asking builders to contact us for all inspections listed on the inspection schedule for the project in the normal way so that we can talk through what is being done and assess the need for inspection via video link or whether photos should be provided. Inspection on site may still be carried out dependant on the stage of the work and the effectiveness of remote inspection. All dangerous structures will still receive a response. Where photos are required they should be provided before work is covered over so that any issues identified can be communicated and rectified.

Where an inspection is required wherever possible this will be carried out remotely using a video conferencing app called Zoom which works across all platforms. In order to use the remote inspection service you will need a good Wifi or G4 connection to the internet on a smart mobile device where the building work is located. You will need to go to the app store on your mobile device and download ZOOM Cloud Meetings which is a video conferencing app and you will need your password. Further information regarding this is [available here](#).

When booking an inspection you will be asked to confirm that you have set this up and we will need to ensure that we have your email address and telephone number for your mobile device.

We will then contact you by telephone and send you an email that will contain a link when the inspection is due. When you click on the link this will connect you to a virtual meeting with your Surveyor. When connecting be sure to enable the video and microphone.

We will then be able to discuss you project and carry out the inspection remotely. If you have any problems please call the Surveyor who will attempt to assist.

### Safety critical work

It is the view of the CIC that the vast majority of construction sites should now be closed to protect public health the only exceptions should be where work is safety critical work ([a list of safety critical work is provided here](#)). Where work is continuing [best practice with regard to social distancing](#) should be complied with at all times.

### Responsibility for compliance

Please note that if work continues on site the person carrying out the work remains responsible for compliance with the Building Regulations. If these procedures are not followed it may prevent a Completion Certificate being issued at the end of the project. Thank you for your cooperation and please do not hesitate to contact us if you have any questions or wish to discuss your project.

Kind regards

Mike Tucker  
Building Control Manager



## Definition of safety critical work

The following list provided by the CIC should be considered indicative of what is considered to be safety critical work. However, the list should not be considered exhaustive.

- Make good unsafe buildings/dangerous structures –District Surveyors need powers to instruct emergency work to be done to make them safe if any occur – and a hastily abandoned site might just lead to a dangerous structure occurring.
- Structural inspections for subsidence / movement to determine risk
- Structural and roofing problems, loose tiles/chimney stacks, weathering
- All general building control work (both LABC and AIs) for nationally important buildings / facilities, e.g. NHS estate, GPs, etc.
- Drainage works / maintenance etc – important to avoid any increased public health problems in this respect
- Fire safety inspections
- Requirement for maintenance of fire protection systems and equipment to meet fire safety legislation – even if buildings are not occupied
- Ongoing need for fire risk assessments, both to meet legislation and new circumstances in buildings
- Remedial work required to remove unsafe ACM cladding etc.
- Glazing replacement
- Locksmithing / lock replacement
- Gas safety work/ suspected gas leaks
- Electrical safety work/ electrical failures
- Flood remediation (especially to homes hit by recent floods)
- Plumbing and heating failures including loss of heating/condensation problems/hot water services
- Emergency Leaking/ flooding
- Health risks associated with blocked drainage/sewerage systems
- Water companies – remedial / emergency work to buildings and assets that are crucial to the supply of clean water,
- New or business/safety critical maintenance work on establishments which are involved in supply chain of vital NHS equipment (for example where manufacturers are building units to make ventilators),
- Factories that are making anything required to combat the virus (e.g. a new hand sanitiser factory is under construction);
- Food supply chain – essential new builds or maintenance on existing buildings
- Extra warehouse space for food distribution by online platforms (to cope with massively increased demand)
- New or business/safety critical maintenance work on establishments which are involved in supply of medicines,
- Essential maintenance on morgues, funeral parlours, and crematoriums
- Essential maintenance and remediation across the health sector
- Installation/maintenance technicians providing services to key sectors – health, power etc
- Emergency callouts, safety checks and essential work in care homes
- Ongoing supervision and security measures
- Sites where anti-terrorism considerations need to take precedence over other concerns – eg Palace of Westminster.
- Urgent works on emergency service properties other than health - police, fire, for example
- Unsafe infrastructure – if a lorry strikes a bridge during the shutdown, for example, then work may be needed to make safe the affected structure
- Bridge inspection and maintenance
- Dam inspection and maintenance
- Maintaining key national infrastructure: power stations and grid, motorways, railways, utilities etc.

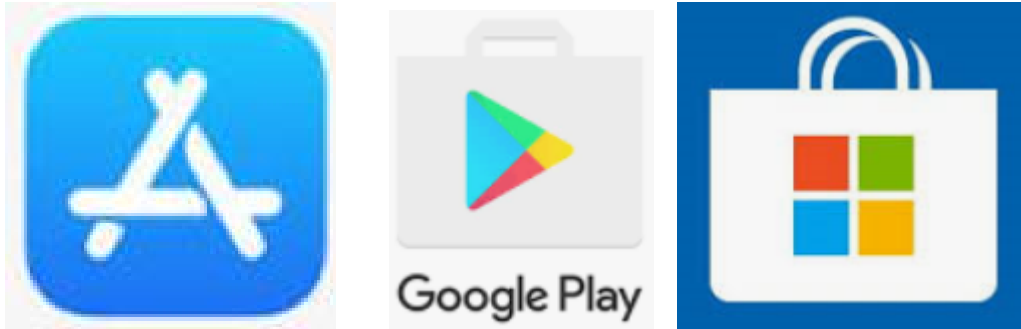
- Repair and maintenance of telecommunications, energy waste and water – these are vital to work from home
- R&D facilities, where related to vaccine development or virus treatment
- Work on factories that make materials that are vital to all elements on this list

[Return to update](#)

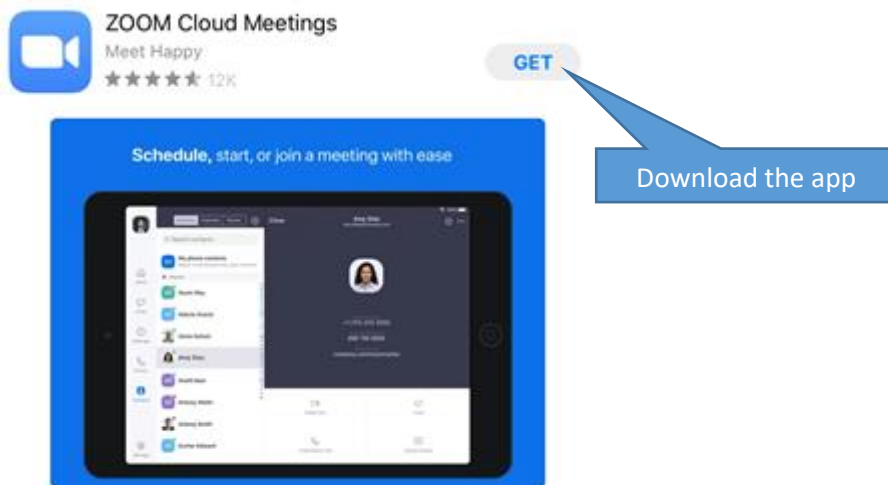
## Remote inspections App Download

**NB These notes provide a guide for setting up for a remote inspection but please note the screens may differ for different platforms**

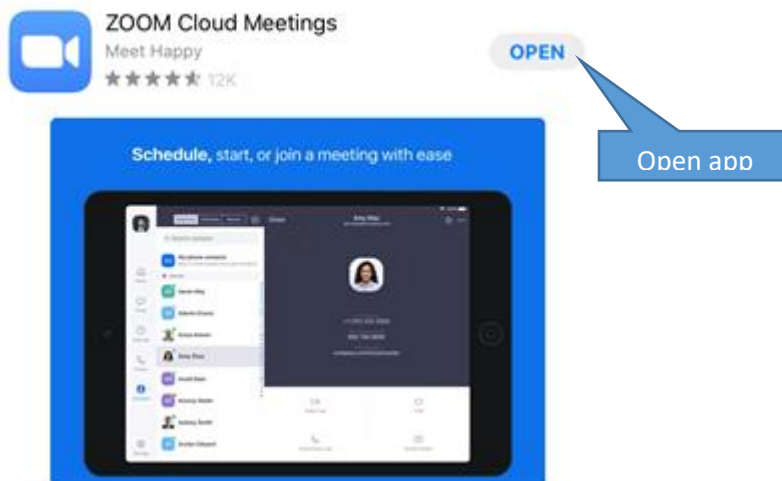
1. Go to the app store on your device.



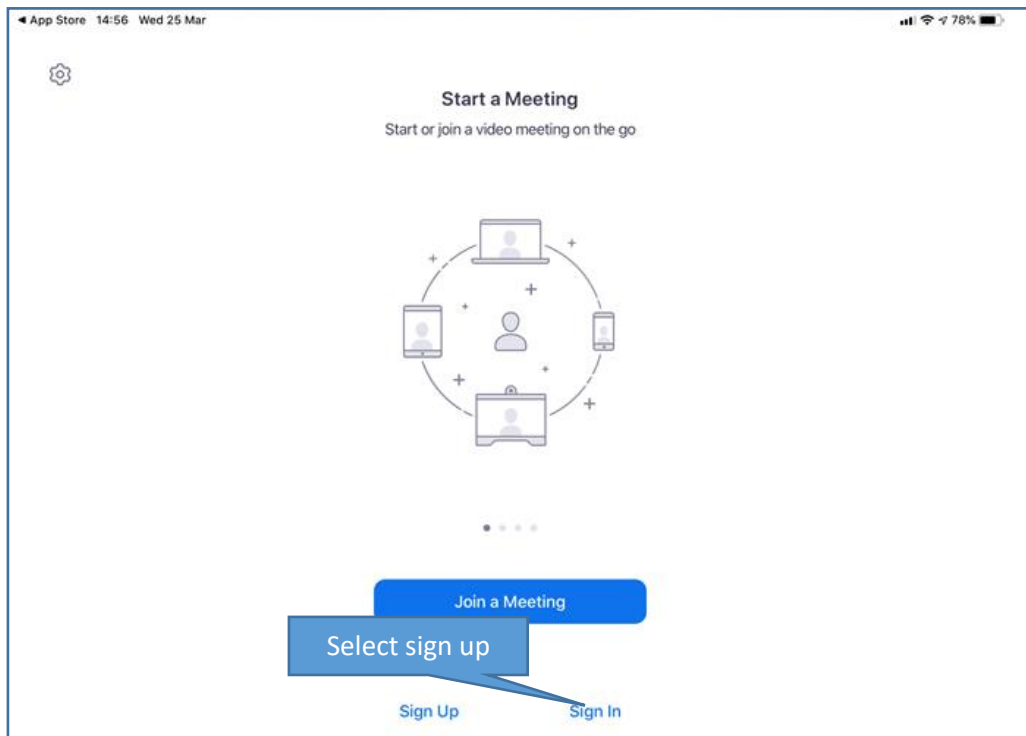
2. Search for the ZOOM app and select



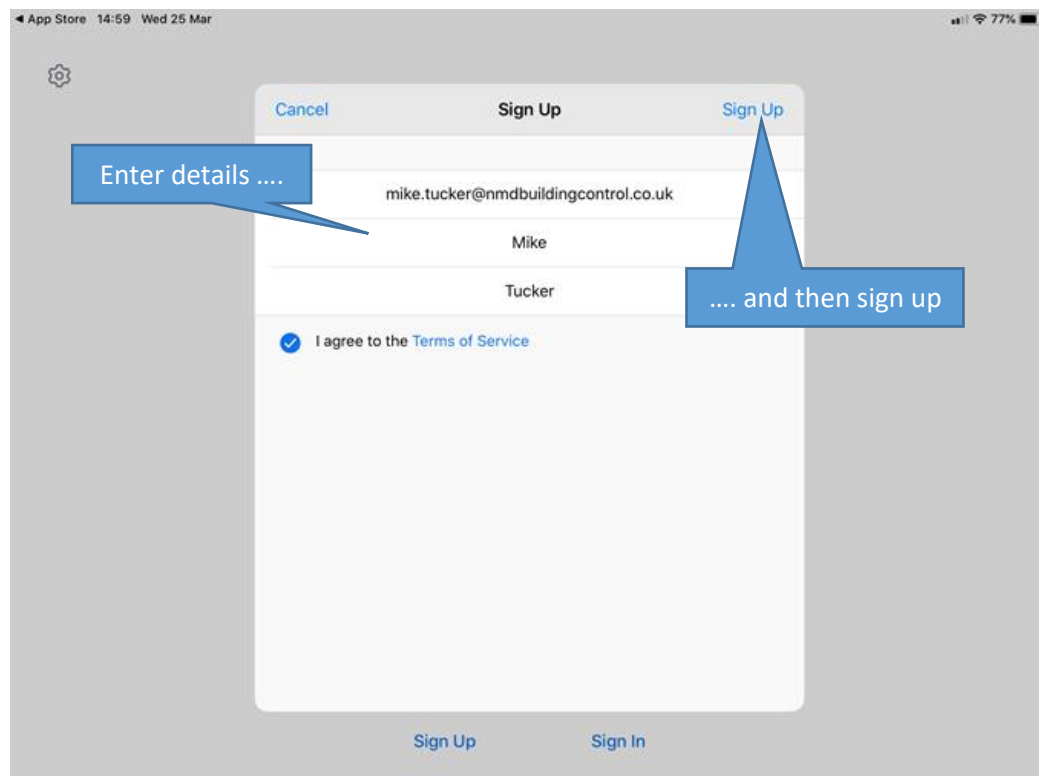
3. When downloaded open the app



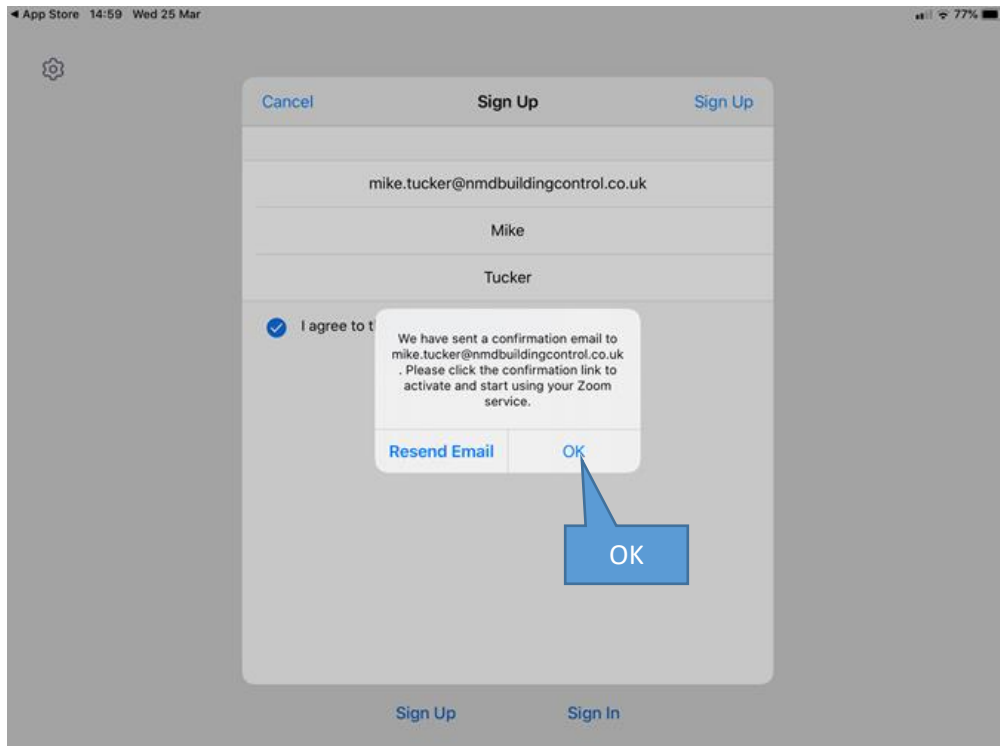
#### 4. Select sign up



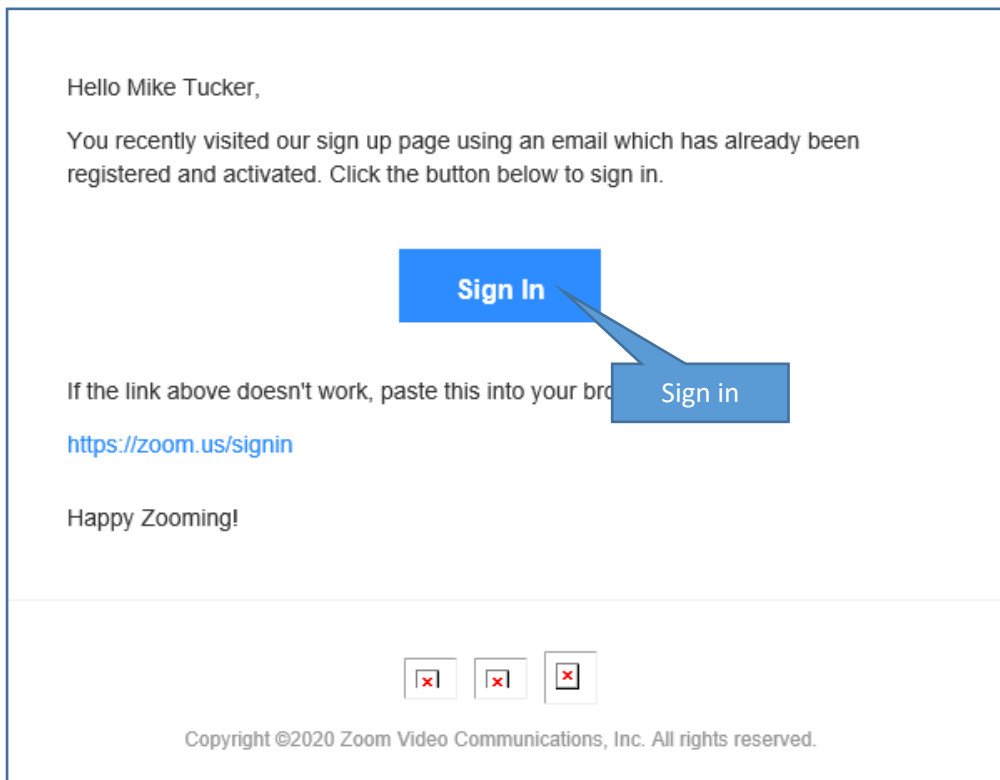
#### 5. Signing up for access



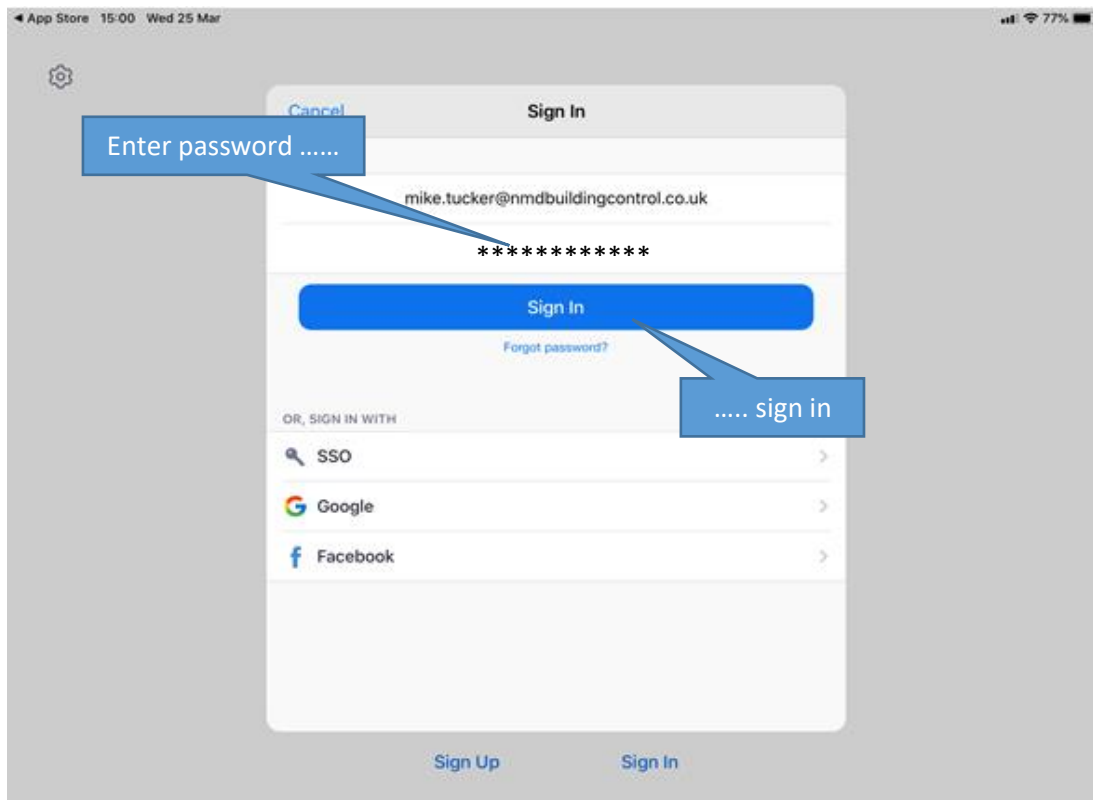
6. Select OK and you will receive a confirmation email



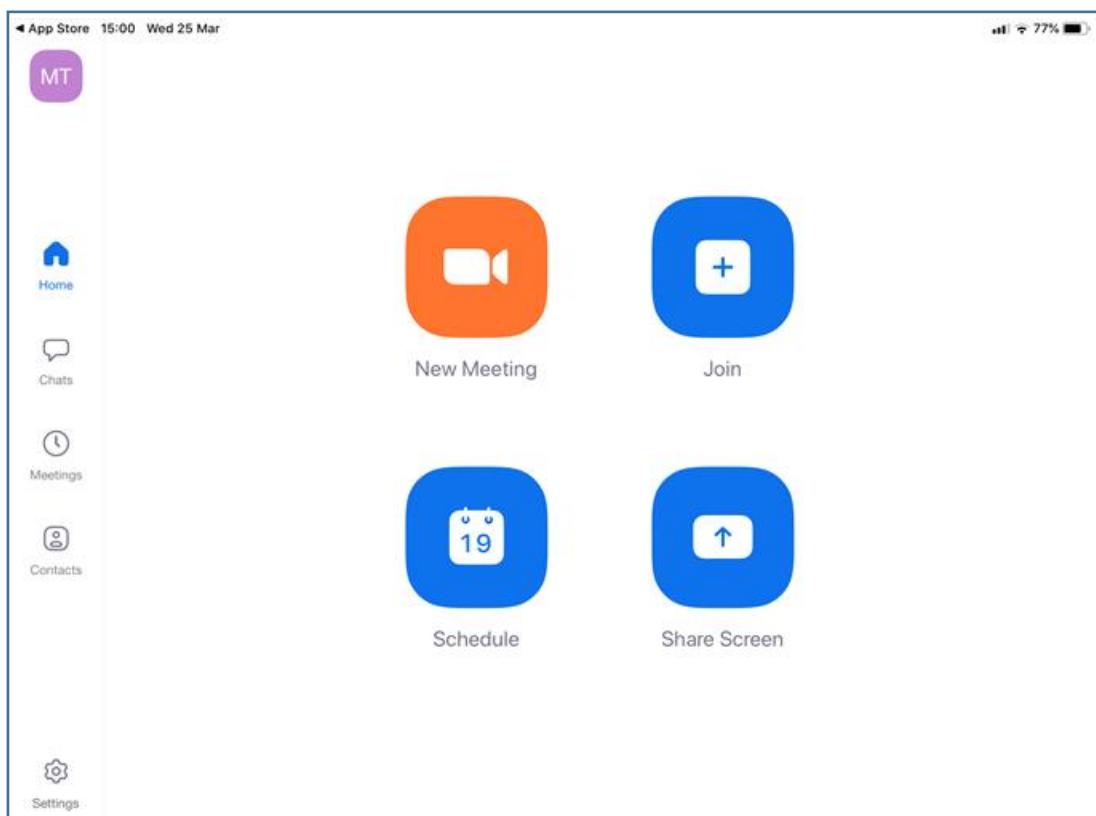
7. Open the email and select sign in



8. Enter your password and sign in

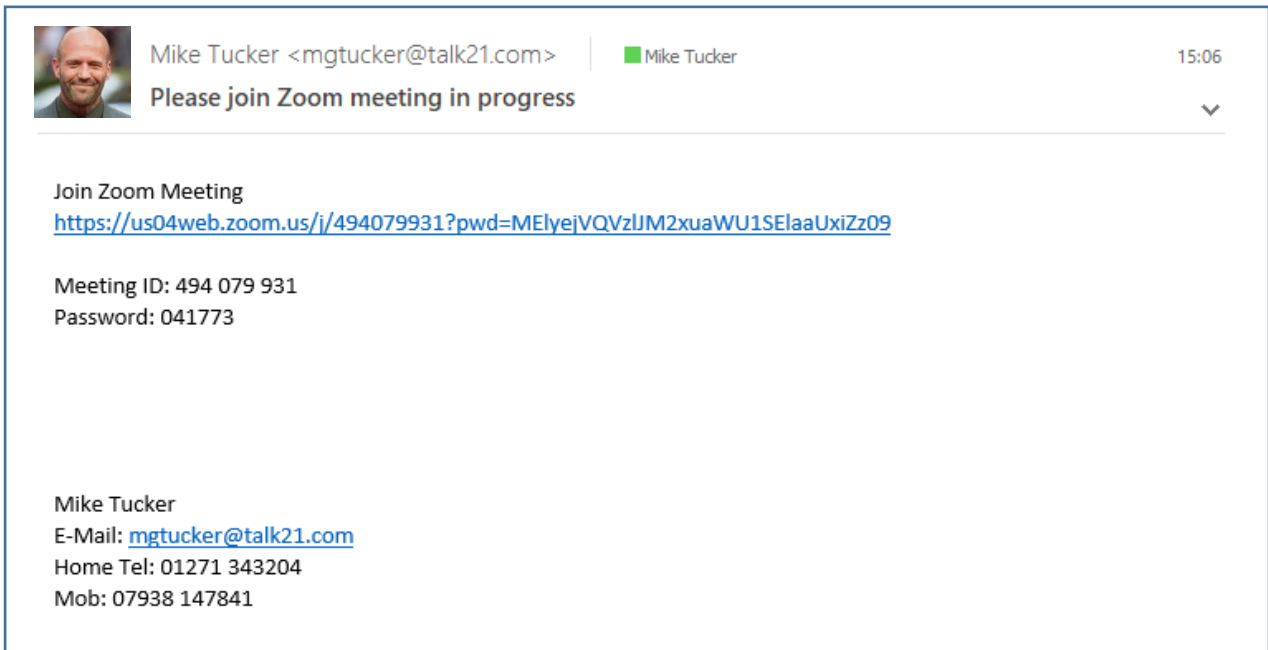


9. You are now set up and ready to receive an email when it is time for your remote inspection. Please ensure we have your email and telephone number when the inspection is booked.

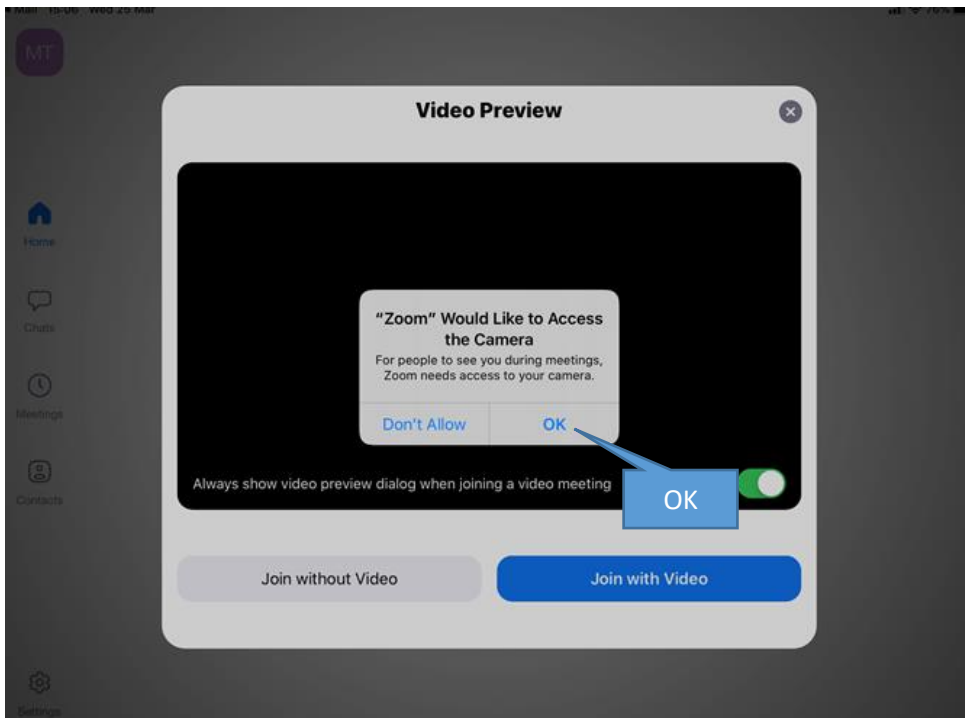




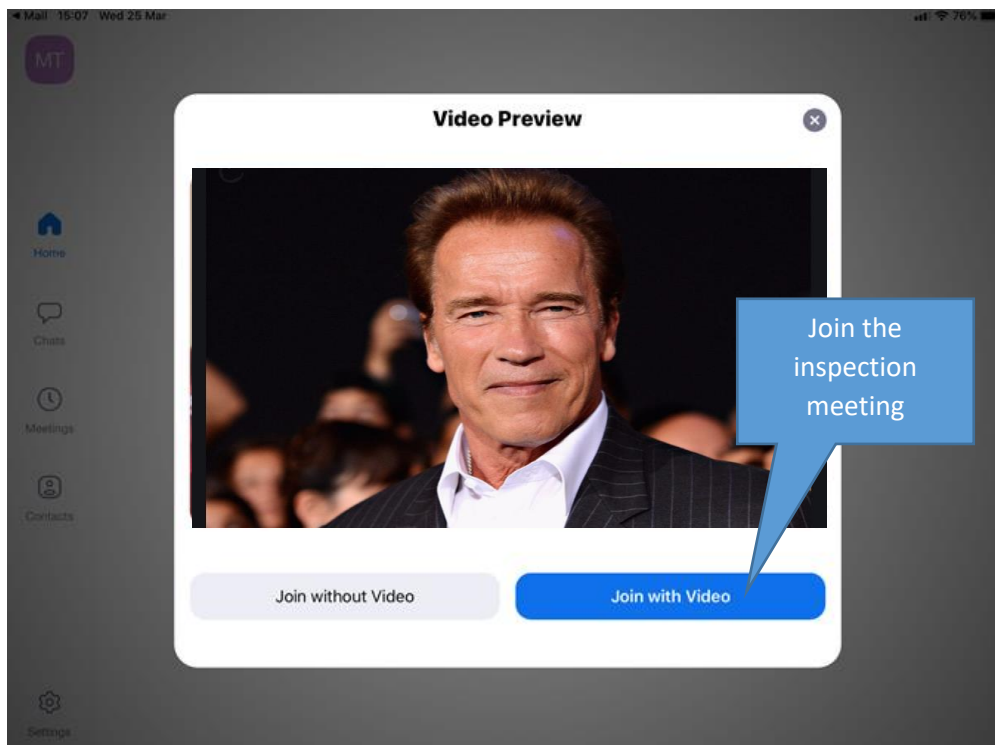
- 10. When it is time for the inspection you will receive a telephone call from the Surveyor and they will send you an email. Please open the link in the email.



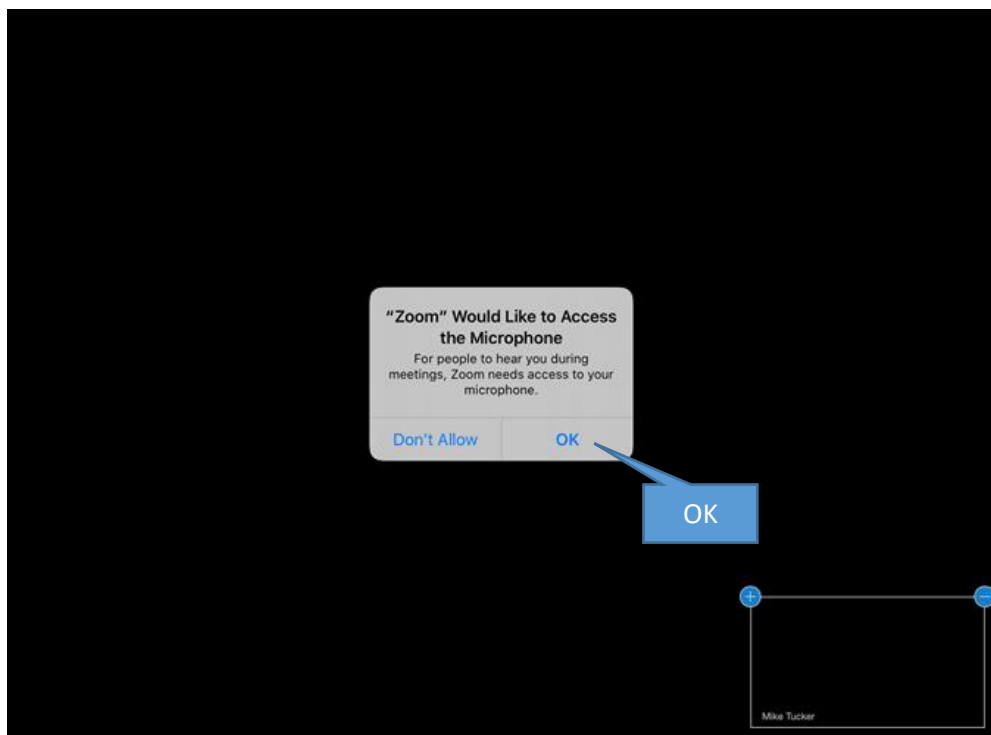
- 11. Allow the app access to your camera



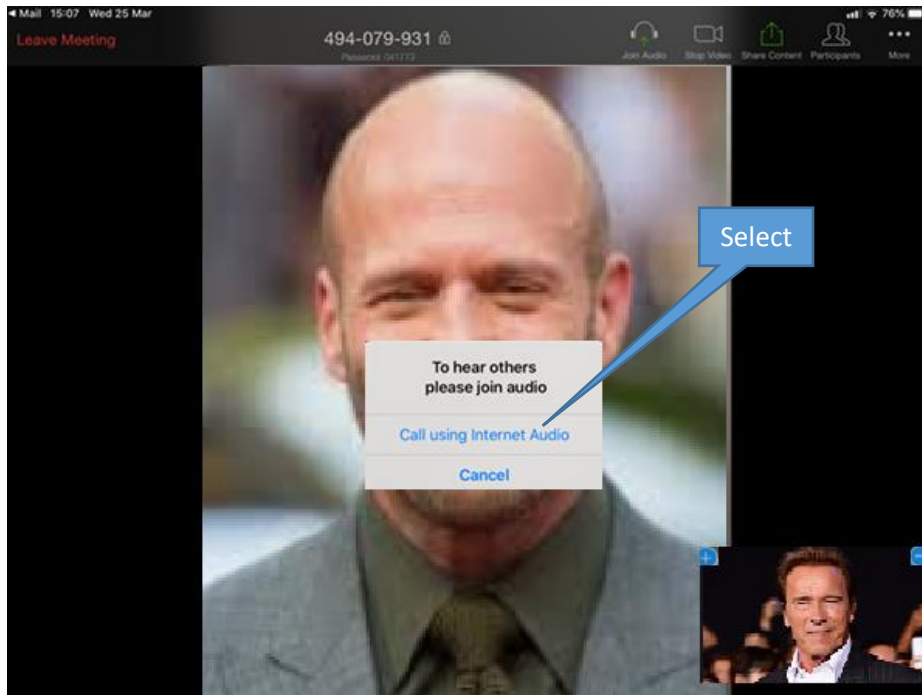
12. Now join the inspection meeting



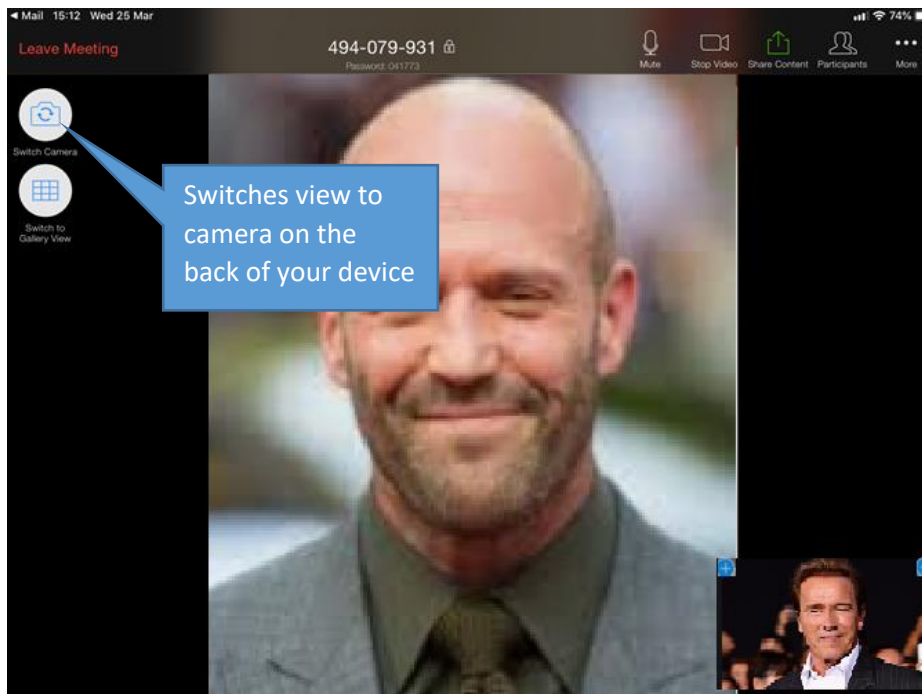
13. Allow the app access to your microphone



14. Select call using internet audio



15. You are now connected and setup is complete. If further inspections are carried out the configuration will start at step 10.



Return to update